

UTWII —SERIES—

NPP LED Solution



Front and Rear Maintenance



Quick Installation



16:9 Ratio



Cable Free Connection

APPLICATIONS



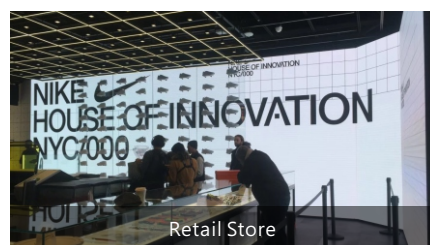
Conference



Control room



Corporate



Retail Store

FEATURES

- Fully front and rear maintenance
- 16:9 ratio – available for quickly splicing 2K, 4K, 8K video wall
- Fast lock design – screw free assembly, realizes quick installation and dismantling
- Cable free connection – reduce time & labor cost



SPECIFICATIONS

Parameter	Value					
Model	UTWII0.9	UTWII1.2	UTWII1.4	UTWII1.5	UTWII1.8	UTWII2.5
Pixel Pitch	0.9375mm	1.25mm	1.45mm	1.56mm	1.875mm	2.5mm
Pixel Density	1,137,778 dots/m ²	640,000 dots/m ²	475,624 dots/m ²	410,913 dots/m ²	284,444 dots/m ²	160,000 dots/m ²
Panel Size (W×H×D)	600mm × 337.5mm × 74mm	600mm × 337.5mm × 74mm	600mm × 337.5mm × 74mm	600mm × 337.5mm × 74mm	600mm × 337.5mm × 74mm	600mm × 337.5mm × 74mm
Panel Resolution	640 × 360 dots	480 × 270 dots	412 × 232 dots	384 × 216 dots	320 × 180 dots	240 × 135 dots
Material	Die-cast Aluminum	Die-cast Aluminum	Die-cast Aluminum	Die-cast Aluminum	Die-cast Aluminum	Die-cast Aluminum
Brightness	600 cd/m ²	600 cd/m ²	600 cd/m ²	600 cd/m ²	600 cd/m ²	600 cd/m ²
Color Temperature	2,000K-95,000K Adjustable	2,000K-95,000K Adjustable	2,000K-95,000K Adjustable	2,000K-95,000K Adjustable	2,000K-95,000K Adjustable	2,000K-95,000K Adjustable
Viewing Angle (H/V)	160°/140°	160°/140°	160°/140°	160°/140°	140°/140°	140°/140°
Panel Weight	8kg	8kg	8kg	8kg	8kg	8kg
Aspect Ratio (W:H)	16:9	16:9	16:9	16:9	16:9	16:9
Service Access	Front/Rear	Front/Rear	Front/Rear	Front/Rear	Front/Rear	Front/Rear
Input Power <Max>	140 W/panel	160 W/panel	146 W/panel	146 W/panel	130 W/panel	80W/panel
Input Power <Ave.>	46W/panel	53W/panel	48W/panel	48W/panel	43W/panel	26W/panel
Ingress Protection	Rear IP50	Rear IP50	Rear IP50	Rear IP50	Rear IP50	Rear IP50
Input Voltage	100~240 V (50~60Hz)	100~240 V (50~60Hz)	100~240 V (50~60Hz)	100~240 V (50~60Hz)	100~240 V (50~60Hz)	100~240 V (50~60Hz)
Refresh Rate	3,840 Hz	3,840 Hz	3,840 Hz	3,840 Hz	3,840 Hz	3,840 Hz
Operating Temperature /Humidity	-10°C to 45°C /10% - 80% RH	-10°C to 45°C /10% - 80% RH	-10°C to 45°C /10% - 80% RH	-10°C to 45°C /10% - 80% RH	-10°C to 45°C /10% - 80% RH	-10°C to 45°C /10% - 80% RH
Storage Temperature /Humidity	-20°C to 55°C /10% - 85% RH	-20°C to 55°C /10% - 85% RH	-20°C to 55°C /10% - 85% RH	-20°C to 55°C /10% - 85% RH	-20°C to 55°C /10% - 85% RH	-20°C to 55°C /10% - 85% RH

DIMENSIONS

