

## Uslim —SERIES—

### INNOVATIVE & FLEXIBLE LED SIGNAGE SOLUTION



Vacuum Tool Service



Front & Rear Maintenance



High Resolution



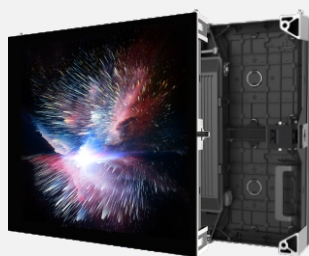
Seamless Screen



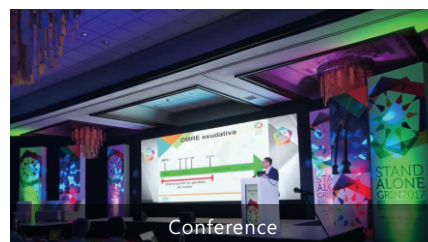
Flexible Installation



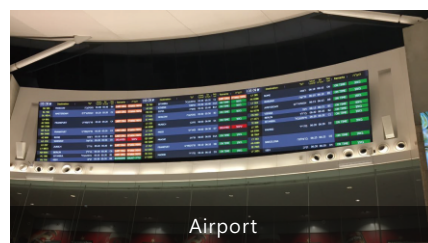
Free Splicing



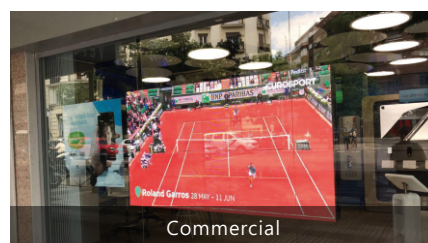
### APPLICATIONS



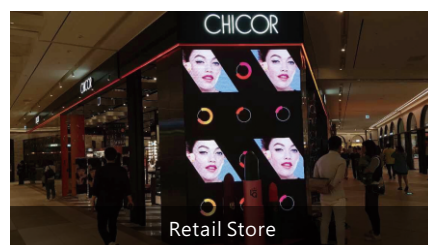
Conference



Airport



Commercial



Retail Store

### FEATURES

- Various size design match – various applications & multiple uses
- Fully front and rear maintenance
- Flexible mounting method
- Available for + 5° ~ -5° curve installation



## SPECIFICATIONS

Parameter	Value			
Model	Uslim1.9	Uslim2.6	Uslim3.9	Uslim4.8
Pixel Pitch	1.95 mm	2.604 mm	3.90 mm	4.80 mm
Pixel Density	262,144 dots/m <sup>2</sup>	147,456 dots/m <sup>2</sup>	65,536 dots/m <sup>2</sup>	43,264 dots/m <sup>2</sup>
Panel Resolution	256 x 256 dots	192 x 192 dots	128 x 128 dots	104 x 104 dots
		192 x 384 dots	128 x 256 dots	104 x 208 dots
Panel Size (W × H × D)	500mm × 500mm × 75.4 mm	500mm × 500mm × 83.3mm	500mm × 500mm × 83.3mm	500mm × 500mm × 83.3mm
		500mm × 1,000mm × 83.3mm	500mm × 1,000mm × 83.3mm	500mm × 1,000mm × 83.3mm
Material	Die-cast Aluminum	Die-cast Aluminum	Die-cast Aluminum	Die-cast Aluminum
Brightness	1,000 cd/m <sup>2</sup>	1,000 cd/m <sup>2</sup>	1,000 cd/m <sup>2</sup>	1,000 cd/m <sup>2</sup>
Color Temperature	2,000 - 9,500 K Adjustable	2,000 - 9,500 K Adjustable	2,000 - 9,500 K Adjustable	2,000 - 9,500 K Adjustable
Viewing Angle (H/V)	150°-160°/140°	150°-160°/140°	150°-160°/140°	150°-160°/140°
Panel Weight	7.8 kg	7.8 kg	7.8 kg	7.8 kg
		13 kg	13 kg	13 kg
Contrast Ratio	5,000 : 1	5,000 : 1	5,000 : 1	5,000 : 1
Service Access	Front & Rear	Front & Rear	Front & Rear	Front & Rear
Input Power (Max.)	500 W/ m <sup>2</sup>	500 W/ m <sup>2</sup>	500 W/ m <sup>2</sup>	500 W/ m <sup>2</sup>
Input Power (Ave.)	167 W/ m <sup>2</sup>	167 W/ m <sup>2</sup>	167 W/ m <sup>2</sup>	167 W/ m <sup>2</sup>
Ingress Protection	Front IP30, Rear IP10	Front IP30, Rear IP10	Front IP30, Rear IP10	Front IP30, Rear IP10
Input Voltage	100 - 240 VAC	100 - 240 VAC	100 - 240 VAC	100 - 240 VAC
Refresh Rate	3,840 Hz	2,880 Hz	3,840 Hz	3,840 Hz
Operating Temperature/ Humidity	-10°C to 45°C/ 10% - 80% RH	-10°C to 45°C/ 10% - 80% RH	-10°C to 45°C/ 10% - 80% RH	-10°C to 45°C/ 10% - 80% RH
Storage Temperature/ Humidity	-20°C to 55°C/ 10% - 85% RH	-20°C to 55°C/ 10% - 85% RH	-20°C to 55°C/ 10% - 85% RH	-20°C to 55°C/ 10% - 85% RH
Certification	UL/FCC/IC/CE/CB/ROHS/CCC	UL/FCC/IC/CE/CB/ROHS/CCC	UL/FCC/IC/CE/CB/ROHS/CCC	UL/FCC/IC/CE/CB/ROHS/CCC

## DIMENSIONS

