

## Upad III — SERIES —

### One, for All



Curve Design



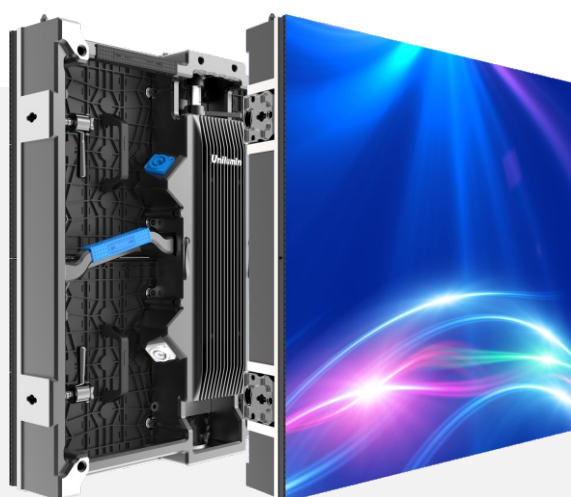
Various Types of Accessories



Easy Installation & Maintenance



Concave & Convex



wfx 2016

NEW  
PRODUCT  
AWARDS

WINNER

### APPLICATIONS



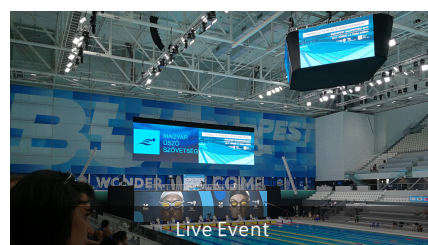
Conference



Exhibition



House of Worship



Live Event

### FEATURES

- Convenient cabinet design – single person installation, disassembly and maintenance
- Multiple uses and multiple structures – curved wall & 90-degree corner & dance floor, etc.
- Brompton systems – organize work and get things done



## SPECIFICATIONS

Parameter	Value		
Model	UpadIII2	UpadIII3	UpadIII03
Pixel Pitch	2.6mm	3.9mm	3.9mm
Environment	Indoor	Indoor	Outdoor
LED Type	3-in-1 Black SMD	3-in-1 Black SMD	3-in-1 SMD
Brightness	1,000 cd/m <sup>2</sup>	1,000 cd/m <sup>2</sup>	5,000 cd/m <sup>2</sup>
Pixel Density	147,456 pixels/m <sup>2</sup>	65,536 pixels/m <sup>2</sup>	65,536 pixels/m <sup>2</sup>
Module Size (W×H)	250mm × 250mm	250mm × 250mm	250mm × 250mm
Panel Size (W×H×D)	500mm × 500mm × 91.6mm	500mm × 500mm × 91.6mm	500mm × 500mm × 91.6mm
Panel Resolution	192 × 192 dots	128 × 128 dots	128 × 128 dots
Panel Weight	9 kg	9 kg	9.2 kg
Material	Die-cast Aluminum	Die-cast Aluminum	Die-cast Aluminum
Ingress Protection	IP30	IP30	IP65
Operating Temperature/Humidity	-10°C to 45°C/10% - 80% RH	-10°C to 45°C/10% - 80% RH	-20°C to 50°C/10% - 90% RH
Maintenance	Rear	Rear	Rear
Curve (Convex - Concave)	-5° to 10°(optional)	-5° to 10°(optional)	-5° to 10°(optional)
Viewing Angle (H/V)	140°/120°	140°/120°	140°/120°
Contrast Ratio	3,000:1	3,000:1	3,000:1
Input Power/Panel (Max.)	120 W	120 W	180 W
Input Power/Panel (Ave.)	40 W	40 W	60 W
Refresh Rate	3,840 Hz	3,840 Hz	3,840 Hz
Input Voltage	100 - 240 VAC	100 - 240 VAC	100 - 240 VAC
Input Power Frequency	50 - 60 Hz	50 - 60 Hz	50 - 60 Hz
Standard Mounting Configuration	Hanging, Stacking	Hanging, Stacking	Hanging, Stacking
Certification	TUV-CE/UL/CB/FCC/IC/RoHS	TUV-CE/UL/CB/FCC/IC/RoHS	TUV-CE/UL/CB/FCC/IC/RoHS

Note: Specifications are for reference only and are subject to change without notice.

## DIMENSIONS

