

Kslim

—SERIES—

INNOVATIVE AND FLEXIBLE LED SIGNAGE SOLUTION



Energy Saving



Slim & Lightweight



Quick Installation



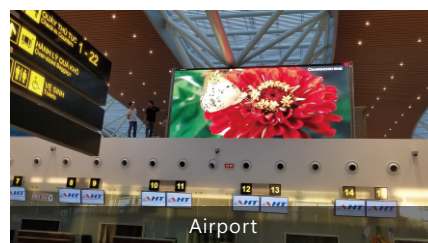
Front Maintenance



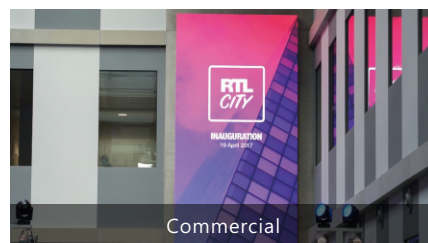
APPLICATIONS



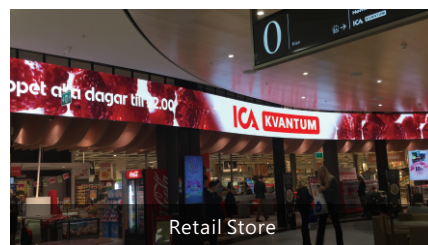
Conference



Airport



Commercial



Retail Store

FEATURES

- Super lightweight and slim
- Noiseless & low power consumption
- Quick installation and fully front maintenance
- High flatness with excellent image performance



SPECIFICATIONS

Parameter	Value		
Model	Kslim2.5	Kslim2.9	Kslim3.9
Pixel Pitch	2.5mm	2.97 mm	3.9mm
Pixel Density	16,000 pixels/m ²	112, 896 pixels/m ²	65,536 pixels/m ²
Panel Resolution	200 x 200 dots	168 x 168 dots	128 x 128 dots
	200 x 400 dots	168 x 336 dots	128 x 256 dots
Panel Size (W × H × D)	500 mm × 500 mm × 88 mm	500 mm × 500 mm × 88 mm	500 mm × 500 mm × 88 mm
	500 mm × 1,000 mm × 88 mm	500 mm × 1,000 mm × 88 mm	500 mm × 1,000 mm × 88 mm
Material	Die-cast Aluminum	Die-cast Aluminum	Die-cast Aluminum
Brightness	800 cd/m ²	800 cd/m ²	800 cd/m ²
Color Temperature	2,000 - 9,300 K Adjustable	2,000 - 9,300 K Adjustable	2,000 - 9,300 K Adjustable
Viewing Angle (H/V)	160°/140°	160°/140°	160°/140°
Panel Weight	7.45 kg	7.45 kg	7.45 kg
	12.5 kg	12.5 kg	12.5 kg
Contrast Ratio	5,000 : 1	5,000 : 1	5,000 : 1
Service Access	Front & Rear	Front & Rear	Front & Rear
Input Power/Panel (Max.)	500 W/ m ²	530 W/ m ²	507 W/ m ²
Input Power/Panel (Ave.)	167 W/ m ²	180 W/ m ²	169 W/ m ²
Ingress Protection	Front IP40, Rear IP20	Front IP40, Rear IP20	Front IP40, Rear IP20
Input Voltage	200 - 240 VAC	200 - 240 VAC	200 - 240 VAC
Refresh Rate	3,840 Hz	3,840 Hz	3,840 Hz
Operating Temperature/Humidity	-40°C~+60°C/10~90%RH	-40°C~+60°C/10~90%RH	-40°C~+60°C/10~90%RH
Storage Temperature/Humidity	0°C~+40°C/10~60%RH	0°C~+40°C/10~60%RH	0°C~+40°C/10~60%RH

DIMENSIONS

