







# UTWIII

## Shape New Slimmer Era for Fine Pitch Commercial 16:9 Display

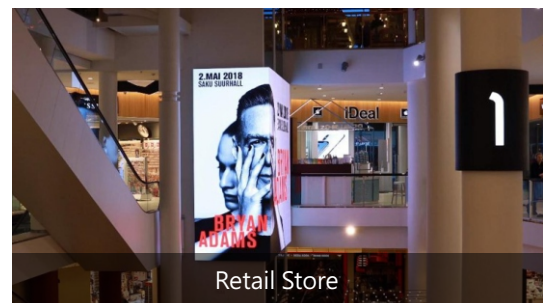
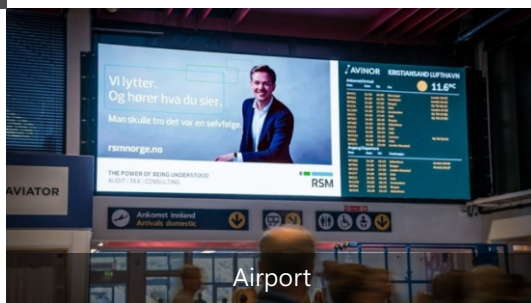
-  Slim & Lightweight
-  8K Experience
-  Flexible installation style
-  Smart maintenance
-  Efficient heat dissipation
-  Double backup



### FEATURES

- 28mm ultra-thin design for easy installation
- 960mm\*540mm large size style to enhance advertising value
- Advanced HDR display for stunning visual experience
- Various mounting methods to unlock unlimited creativity

### APPLICATIONS



## SPECIFICATIONS

Parameter	Value				
Model	UTWIII1.2	UTWIII1.5	UTWIII1.8	UTWIII2.0	UTWIII2.5
Pixel Pitch	1.25mm	1.5mm	1.87mm	2.0mm	2.5mm
LED Type	3-in-1 SMD	3-in-1 SMD	3-in-1 SMD	3-in-1 SMD	3-in-1 SMD
Pixel Density	640,000 pixels/m <sup>2</sup>	444,444 pixels/m <sup>2</sup>	284,444 pixels/m <sup>2</sup>	250,000 pixels/m <sup>2</sup>	160,000 pixels/m <sup>2</sup>
Pixels Per Panel	768 × 432 pixels	640 × 360 pixels	512 × 288 pixels	480 × 270 pixels	384 × 216 pixels
Cabinet Size (W×H)	960 × 540 mm	960 × 540 mm	960 × 540 mm	960 × 540 mm	960 × 540 mm
	480 × 540 mm	480 × 540 mm	480 × 540 mm	480 × 540 mm	480 × 540 mm
Cabinet Thickness	28 mm	28 mm	28 mm	28 mm	28 mm
Material	Die-casting Aluminum	Die-casting Aluminum	Die-casting Aluminum	Die-casting Aluminum	Die-casting Aluminum
Weight	20.56 kg/m <sup>2</sup>	20.56 kg/m <sup>2</sup>	20.56 kg/m <sup>2</sup>	20.56 kg/m <sup>2</sup>	20.56 kg/m <sup>2</sup>
Brightness	600 cd/m <sup>2</sup>	600 cd/m <sup>2</sup>	600 cd/m <sup>2</sup>	800 cd/m <sup>2</sup>	800 cd/m <sup>2</sup>
Grey Scale	14 bit	14 bit	14 bit	14 bit	14 bit
Refresh Rate	1,920 - 3,840 Hz	1,920 - 3,840 Hz	1,920 - 3,840 Hz	1,920 - 3,840 Hz	1,920 - 3,840 Hz
Frame Frequency	50/60 Hz	50/60 Hz	50/60 Hz	50/60 Hz	50/60 Hz
Color Temperature	2,000-9,300k (adjustable)	2,000-9,300k (adjustable)	2,000-9,300k (adjustable)	2,000-9,300k (adjustable)	2,000-9,300k (adjustable)
Contrast Ratio	5,000:1	5,000:1	5,000:1	5,000:1	5,000:1
Viewing Angle	155°/155°	155°/155°	155°/155°	155°/155°	155°/155°
Input Voltage	100 - 240 VAC	100 - 240 VAC	100 - 240 VAC	100 - 240 VAC	100 - 240 VAC
Input Frequency	50 - 60 Hz	50 - 60 Hz	50 - 60 Hz	50 - 60 Hz	50 - 60 Hz
Input Power (max)	≤ 600 W/m <sup>2</sup>	≤ 500 W/m <sup>2</sup>	≤ 500 W/m <sup>2</sup>	≤ 500 W/m <sup>2</sup>	≤ 500 W/m <sup>2</sup>
Input Power (typical)	≤ 200 W/m <sup>2</sup>	≤ 167 W/m <sup>2</sup>	≤ 167 W/m <sup>2</sup>	≤ 167 W/m <sup>2</sup>	≤ 167 W/m <sup>2</sup>
Storage Temperature and Humidity	-20°C~+55°C/10-85%RH	-20°C~+55°C/10-85%RH	-20°C~+55°C/10-85%RH	-20°C~+55°C/10-85%RH	-20°C~+55°C/10-85%RH
Working Temperature and Humidity	-10°C~+45°C/10-80%RH	-10°C~+45°C/10-80%RH	-10°C~+45°C/10-80%RH	-10°C~+45°C/10-80%RH	-10°C~+45°C/10-80%RH
Ingress Protection	Front & Rear IP30	Front & Rear IP30	Front & Rear IP30	Front & Rear IP30	Front & Rear IP30
Certification	CCC/CQC	CCC/CQC	CCC/CQC	CCC/CQC	CCC/CQC

## DIMENSIONS

